

**Copyright © 1994 by Eric Lee Steadle and Brian C. Lowe. All rights reserved.**

No part of these games, including executable code, dynamic link libraries, bitmaps, sound effects, music files, or electronic documentation may be reproduced (electronically, mechanically, manually or otherwise) without the express written consent of its authors, Brian C. Lowe and Eric Lee Steadle. These programs are the intellectual property of its authors.

Warped is a Trademark of Brian C. Lowe and Eric Lee Steadle

## **Accelerator Keys**

Most games respond to the following accelerators:

F1 for HELP.

CTRL - C or F9 to pull up the Control Dialog Box (Main Options).

CTRL - S to pull up the Status Dialog Box.

CTRL - X or F3 to get out of the game.

CTRL - H for the High Scores

CTRL - P to pause

CTRL - B for Boss Button.

## Joysticks

Most of our games have the ability to use a joystick, however your system needs to have a joystick driver installed. Most cheapo joystick manufacturers are too cheap to write a joystick driver. The Warped for Windows package includes a generic joystick driver on the Installation disk. You'll need to install it from the Drivers Applet of the Windows control panel.

You can also obtain a Joystick driver from the Microsoft Windows Supplementary Driver Library, available from Microsoft for a nominal fee, or by downloading it from the Microsoft Download Service. These will be more current than those you obtain from us. They also provide something we can't - a calibration utility.

1. First start the control panel.
2. Next, double click the Drivers applet. A list of currently installed drivers is displayed.
3. Click the Add... button. Another list is displayed.
4. Scroll through the list until you find 'Unlisted or Updated Driver' and select this item. A dialog asking for the path to the new driver is displayed.
5. Type 'A:\', place the first Installation Disk in drive A, and press OK. A list should be displayed that contains one item, the Generic Joystick Driver.
6. Select Generic Joystick Driver and press OK. The setup program will copy the necessary files to the right place.
7. When its done copying it will tell you that you should restart Windows for the driver to take effect. Do So.
8. Note that Windows may ask you to configure the Joystick. A dialog showing two options will be displayed. One option is for a single 3 - d Joystick (do not select this one), and the other is for two 2-d Joysticks (select this one even if you only have one joystick attached to your system).
9. If Windows does not ask you to configure the joystick immediately, when it reboots, you can use the control panel again to configure it. See next step.
10. Select the drivers Applet again. This time you should see the joystick driver.
11. Select the joystick and press the Setup... button.
12. Choose two 2-d joysticks (even if you only have one joystick attached to your system).

[Advanced information about Joysticks](#)

## Memory Issues

The amount of free memory needed by many of these games varies widely depending upon your video hardware. If you run straight 16 color VGA you'll need much less memory than if you run 1024x768 in 256 colors. If you encounter trouble we suggest that you try the following before you jump off a bridge (and if these don't work, please don't jump off a bridge - our world needs you, since you're one of the few sane one's left).

1. More often than not, it isn't physical memory size or RAM which is in short supply; it's system resources. This is because Windows stores information for each program's resources in two tiny 64k segments called GDI and USER. Every program consumes some system resources and they come from these two really tiny segments. When it runs low Windows won't let more programs load - a kind of self preservation feature. If this is the problem, exiting other programs will usually cure the problem. If it does not, your problem may indeed be that you have insufficient RAM, read on.
2. Get rid of your background / desktop bitmap. This can suck up a large amount of memory if you are running in high resolution video modes; about 700 - 800k for a full screen bitmap in 1024x768 at 256 colors.
3. If you have a 386 then allocate Virtual Memory (also known as a swapdisk). Windows can use part of your hard disk as memory. It swaps parts of programs and data that aren't being used very much to a special location on your disk. When it needs this information again, it can retrieve it very quickly. Also, Windows manages memory differently when a swapdisk is present. Without a swapdisk, Windows compresses memory (discards all discardable segments) whenever you load a program -- even if you have plenty of memory available. With a swapdisk, however, Windows launches the program and relies on the memory manager to create the required space for it, presumably by swapping things to disk.

In most cases you should allocate the amount of memory that Windows suggests. However, very large swapdisks (greater than about 8 MB) should be avoided. They take up hard disk space and provide little additional benefit. If you have 16 or more MB of memory, allocate as little swapdisk space as possible. You'll get the benefits of the swapdisk memory management techniques without taking up significant disk space and the large amount of memory will ensure that very little swapping actually takes place.

Note, you should have at least 4 MB of physical memory in 386 enhanced mode anyway. If you are running SVGA or higher, you definitely should have more. 8 Megabytes is about right.

See your Windows manual for more information.

4. Turn off the Sound Effects. Our programs used digital sound effects as well as MIDI background music. Digital sounds are much more memory intensive and occupy many kilobytes in memory. To avoid delays in playing those files, they must be kept in memory (which means less available for programs). Turn them off and they don't get loaded.
5. Switch to a lower Video Mode. As mentioned above, SVGA mode can take up to 800 KB for a single picture. When running one of our games, there may be up to two of these big pictures in memory at one time, meaning that 1.6 MB of free ram are required as a minimum just to get the programs up and running. A lower video mode means less space required (and you'll probably notice an increase in speed as well). All of our games attempt to handle the differences between video modes with grace.
6. If all else fails, you might be facing one of those really important times in your life where two roads diverge in a yellow wood and you being one traveler and all you're sorry you cannot travel both. It's either buy more memory, or perhaps a new machine, or give up the thing altogether. Let's face it, if you've got maybe 2

MB in your machine and you're trying to run this high powered stuff, you're going to have headaches. Spend your money on RAM and stop spending it on aspirin.

## Other Notes

The MIDI file background music was authored to the General MIDI standard on a Media Vision Pro Audio Spectrum 16 using a Casio MT-740. The patch setup for the songs uses channels 16 and 10 as percussion channels, and channels 13, 14, and 15 as main music channels. Channels 1, through 10 are used to accent music. If you don't hear drums, then you need to edit your MIDI patch maps and / or key maps. If you hear piano or something which imitates the rhythms made by the drums you need to edit your patch maps. This often occurs on the ProAudio Spectrum and can be remedied by mapping channel 10 to 16 with the MIDI mapper (on the Control Panel). See your Windows manual for information about editing patch maps. You may wish to consult the Windows Resource Kit on this one as well. It is available from that big software company in Redmond.

The joystick driver was not written by us, please don't blame its shortcomings on us.

Long live Grimmy.

## **Give Me a clue**

Ooooh, so you need some help, Locust. Can't figure it out huh? Well, here's some clues:

The eyes have it.

Search through Johnny Fingers' fictional hints.

Walk a hundred steps in my shoes in The Execution.

## **Jokes**

This guy decides to join a monastery, and one of the requirements is a vow of silence. The head monk informs him that once every ten years as a special reward, each monk is allowed to say two words.

After ten years go by, the head monk calls the monk in and says, "It's been ten years and it's time for your reward. You may say two words."

To which the monk replies, "Food cold."

Another ten years goes by and again the head monk calls the monk in and says, "Congratulations on another ten years, you may say two more words."

This time the monk replies, "Bed hard."

Again, ten years pass and the head monk calls him in and says, "Ten years have gone by, what do you have to say?"

The monk yells, "I Quit!"

To which the head monk replies, "Well that's no surprise, you've been complaining ever since you got here."

Q: How many Microsoft programmers does it take to screw in a light bulb?

A: None, they just rewrite the standard to be darkness.

A man goes to the doctor for a routine medical checkup, but the doctor informs him that he has developed a rare cancer and has only six months to live.

"I only have six months? What should I do?" the man asks.

The doctor replies, "the only thing I can suggest is that you get married as soon as possible."

"Will that cure me?" the man asks.

The doctor says, "No, but it will be the longest six months of your life."

Another guy goes to the doctor and says, "Doc, it hurts when I touch my forehead."

The doctor looks at his forehead as the man further explains, "It also hurts when I touch my shoulder."

The doctor looks at his shoulder as the man continues, "And it hurts when I touch my chest."

The doctor stands back and replies, "Well no wonder, your finger is broken."

### **WARNING: the crude ones start below:**

A married couple are visiting their doctor. The husband says to the doctor, "Doc, I'm worried. My testicles are blue!"

After examining the husband the doctor sends him out of the room in order to confer privately with the wife.

"Mrs. Hudson, are you using the diaphragm that I prescribed for you?" the doctor asks.

"Why yes doctor, I am" she said.

"Well what type of lubricating jelly are you using?"



"Grape."

Q: Why are lawyers like sperm?

A: Only one in a million ever does anything worthwhile.

Q: How can you tell if a lawyer is well hung?

A: You can't put your finger between the rope and his neck.

Q: What goes blond, brunette, blond, brunette, blond?

A: A blond doing cartwheels.

A church organist located in the balcony of an average size church gets up to adjust her seat when she loses her balance. She falls over the railing of the balcony, but is fortunate enough to grab the chandelier thus avoiding a catastrophe. Her skirt, however, flairs open. A mother sitting below is aghast when she notices that the organist isn't wearing underwear. She quickly turns to her son and says, "Don't you dare look up or you'll go blind." The son covers one of his eyes, looks up, and replies, "I'll risk one of them."

## **About the Authors**

*Brian C. Lowe* (a.k.a. Overlord) - having defeated the evil Mamba Krishna's of South America by MacGyvering the sap of a rubber tree, several feet of licorice, a can of name-brand cola, and a condom into a devastating shrapnel saturating high-explosive, is off to Singapore at the request of the Singapore government. He will be the guest caner for a special convention of vandals, thieves, and world renowned lawyers. Brian's newly adopted motto is, "No buttocks shall go unscarred."

*Eric Lee Steadle* (a.k.a. Dictator) - after being featured on the famous television program, "*America's Most Disturbed*", and with the aid of naked pictures of a local television newscaster and a cattle prod, Eric has been recaptured and is again undergoing therapy at the Trafford Area Mental Health and Rehabilitation Center. His therapists think that significant progress can be made if Eric can overcome his fear of capital letters, HDPE plastics, and stupid talk shows. Although he is under sedation, his therapists aren't certain that he'll ever become a productive member of society. If not, he can always become Vice President.

Phrases overheard during the programming of Warped for Windows

## ***Special Thanks***

### **People who helped us**

Annette Steadle

Dianne Swart

Chuck Gnagy

Kyle Gnagy

Lloyd Wright

### **Beta Testers**

ARJUNA

Conley J. Boyd

Ed Green

Theodore C. Jones

Walt LeCouteur

Stacy Megahee

Steve Queen

Carol L. Welcomb

### **Miscellaneous**

Margaret Shortridge (she has the nicest smile)

Stephanie Seymour (Thank you for more than you know. If you're ever in the area, stop in...)

Luzianne® Tea Company (For Eric's addiction)

Labatt Breweries of Canada

John of Austin Tech. Support

MEI Micro (Where's our pizza?!?)

Whoever it was that helped us with the questions.

French Foreign Legion

We would also like to thank the Venusian Armed Forces. Without their help the Onslot project would not have been possible.

[About Warped Software NQI](#)

Beer and women.

Make cow sound on the 'no' for better comical effect.

Like actors, sports figures, Nobel Prize winners, former presidents, etc.

cotton swab

!looc oot si erawtfos depraw



leulc a em eviG

yddub ruoy si repaeR ehT

drah em praw ,ybab em praW

!daed ton si nosirroM miJ

Although we think magenta is up there.

We flipped a coin and Brian lost.

## ***Phrases overheard during the programming of Warped for Windows***

They probably don't make any sense to you, but they're absolutely hilarious to us.

"Snakes hate wirenuts!"

"Assume compiler wait position."

"Mommy test-tube! Mommy test-tube!"

"Conform or be cast out!"

"Simple but enjoyable."

"Is this thing on?"

"I think I need more hardware."

"It's in there somewhere."

"Didn't we fix this before?"

"Who created this evil thing?"

"You're out of here Abby."

"Oh, I can just print it out."

"Your delete privileges have been revoked!"

"Uh, oh."

"What's that Tech Support number again?"

"Don't get too happy - I'm using it's cousin."

"That's what you get for messing with the moth Mafia."

"You seem to be a very clever person. It's unfortunate that I must kill you."

Jokes

there is some debate about this particular point, however



### ***OK, Cancel, and Help Buttons***

You'll find these buttons on almost every dialog box throughout our games. The OK button is used to accept any changes made on the dialog. Cancel is used to abort any changes that you may have made. Help launches the Windows help utility (this program) and loads this file (the one you're now reading).

### ***Starting Level***

The scroll bar in this area lets you change the level of the game. Some of our games allow you to start at higher levels (they are scaled differently). In general, the higher the number the more difficult the game.

Some games don't have a starting level (The Execution and Johnny Fingers) since they really don't have a level structure.

## **Sound**

Our games use two types of sound: Waveform audio and MIDI audio. These two types of audio require a sound board for the best sound. It is possible to use a waveform driver for your PC speaker, but the sound quality is poor and it will still not allow you to hear MIDI music. Our games check to see whether you have correctly installed and configured your Waveform and MIDI drivers. If not these options will not be enabled.

a third type of sound, affectionately termed "Smacking your fist against the nearest convenient rigid object," was considered, however it lacked a certain tonal quality and rhythmic certainty to be an effective multimedia tool. You'll just have to make do without it, or alternatively, you can author the third sound yourself. We suspect that most folks will at least try this special effect.

## ***Advanced Options***

This space is reserved for options that are specific to a game. You'll find buttons in this area which will launch such things as the Game Options dialog box, the Controls dialog box, etc. Click on the specific button for more information.

## ***Settings***

We designed our games to be flexible. There are so many options that, in fact, it might become cumbersome to fiddle with all of them. So we provided buttons which save all of your current settings to a file (called WARPED.INI). Use the Save button to save the current settings, use the Load button to load the settings from the INI file, and press the Defaults button to set the game up the way it came from the factory.

### ***Load (options)***

Once you get the game adjusted the way you like it, you can save it (with the Save button). Then once you've done that, you can load your settings all at once by pressing the Load button.

**Note:** All of your settings are saved in a file called WARPED.INI in your WARPED directory. These settings are loaded automatically at the beginning of the game. You won't need to use load every time the game starts. But if you make some temporary changes and wish to go back to your standard setup you need not exit the game, simply click the Load button. Load is not available in Shareware versions of the games.

---

### **Save (options)**

Once you get the game adjusted the way you like it, you can save it by pressing this button. This button writes all of your settings to a file called WARPED.INI. The next time you start the game your options will be loaded automatically. You can also load the settings in your INI file at any time using the Load button.

**Note:** Your options are NOT automatically saved when you exit the games. They were programmed this way intentionally. If you want to save options you need to use the Save button. Save is not available in Shareware versions of the games.

---



***Default (options)***

This button will restore the default options (the options that the game sets the very first time you run it). This allows you to play with your setting, without ever getting too far away from the established 'normal' options.

## ***Restart***

Click this button to start over during the middle of a game. You'll notice that certain options are not available during the middle of a game (for example you cannot change number of players while you are engaged in a game). The Restart button allows you to quit the current game, begin again, and enable all options.

**Note:** When you first start a game, you'll find that the Restart button is disabled. You can't really re-start until you've started once. Subsequent visits to the Main Options dialog box cause this button to become available.

---

## ***Exit***

This is one of the three methods you can use to quit the game. The other two are Close on the System Menu, and the Ctrl-q accelerator.

### ***Status Dialog Check Box***

Check this box if you want the status dialog box to be shown between rounds and between player's turns.

**Note:** You'll always see this dialog box at the end of the game, regardless of the status of the Status Dialog check box.

---

### ***Display Score Check Box***

Check this box if you want to be able to see your score on screen while you're playing your game. This can be distracting at times, but is mostly a matter of preference.

**Note:** The Status dialog box shows your score in addition to other information about your current game.

---

### ***Display Lives Check Box***

Check this box if you want to be able to see the number of lives you have remaining while you play your game.

**Note:** The Status dialog box shows the number of lives you have remaining in addition to other information about your current game.

---

### ***Pause Check Box***

Check this box if you want your game to pause when you exit from the Main Options dialog box. Press a mouse button or any key to resume the games.

**Note:** All games pause automatically when you switch from them to another Windows application, and resume when you switch back.

---

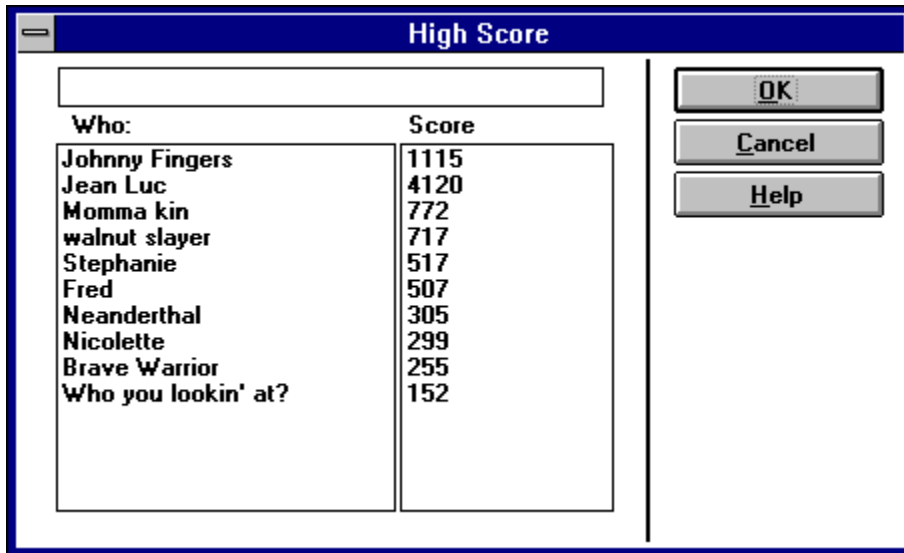
### ***Smart Comments***

We place important and significant comments in this area about the controls on each of the dialogs. As you manipulate the controls, watch this area for a comment.



## Hi Score Dialog Box

Most Warped for Windows games have a high score system. The high score dialog box (pictured below) shows you the top ten scores and the names or cool quotes that correspond to those scores. If you break a high score, one of the names will be blank and you'll be able to edit it. Type in your name or favorite saying. Remember that your spouse may play this game some time in the future so don't write anything obscene.



**Note:** The high scores are stored as entries in the WARPED.INI file for each of the four games (Walnuts, SpaceRocks, Venusian Onslaught, and RIPCord) of the form `Scorex=` and `Whox=`. If you decide that you can't live with those scores load up the ini file and delete those entries. And if you do decide to go mucking around with this file, make a backup. Our games are smart, but even Enrico Fermi can't make good conclusions with bad data.

---

## Problem Report

If you have a problem with the games, including crashes, inability to run any of the games, or anything similar, please print and then fill out this problem report.

If you are familiar with Dr. Watson (a utility used to monitor Windows and Windows' applications) then please transmit a copy of the DRWATSON.LOG file found in your Windows Directory (following a General Protection Fault).

Finally a program called Microsoft Diagnostics (MSD.EXE) is included with Versions of Windows later than 3.1 and versions of DOS later than 5.0. This program can give you a summary of your system. This report can get somewhat long and you may wish to print the report to a file, then send it on disk.

### Game Name

Describe the problem:

Is this problem reproducible or intermittent? Explain.

Description of actions leading up to crash. Note: be VERY detailed and tell us how to break it on our machines.

Describe what happened after the crash. Did your system become unstable? Did you exit and reboot?

Did you find a way to work around this problem? If so describe your actions.

Return this problem report and any additional information to:

**Eric Lee Steadle**  
**750 Harrison City Road**

**Trafford, PA 15085-1634**  
**ATTN: Warped Problem Report**

### 3 Dimensional Dialog boxes

Warped for Windows can use the 3D control library that has been written for Windows version 3.1 and above. The use of 3D dialogs is automatic, the first time you run one of the games, they check to see whether an INI file entry exists. If the INI file doesn't exist, it creates one and turns on the 3D dialogs. If you don't want 3D dialogs, you can disable them manually.

To manually disable 3D dialogs:

Load the WARPED.INI file in your WARPED directory into a text editor.

Look for the following two lines in the file

```
[WARPED]  
3DDIALOGS=1
```

To disable the 3D dialogs, change the 1 in the second line to a 0. To enable them again, change value back to 1. If the two lines are not located in the INI file, they can be added to the end of the file to enable the 3D dialog boxes.

**Note:** The 3D dialogs only work with Walnuts, SpaceRocks, Venusian Onslaught, and RIPCord.

**Note:** You must have the dynamic link library called CTL3D.DLL installed on your system for this to work. If you do not, and you attempt to enable 3D dialogs, you may get errors. Change the setting back to 0 to disable them and everything should be fine.

---

## **Advanced Information about Joysticks**

You may not be able to use both joysticks, even if you have both installed. We have had limited success with multiple joysticks. If your Joystick manufacturer or I/O card manufacturer has published a joystick driver and you can't seem to get both joysticks to work with the included driver, we suggest installing their joystick driver and trying again.

You may also wish to contact your game port card's manufacturer for suggestions. If you have two different cards which each support a game port, they could both be using the same interrupt request and/or I/O address. Your manufacturer would be able to tell you whether these settings could be changed, and if so, how to do it.

## Note to Shareware Distributors

If you are a shareware distributor please feel free to redistribute this game to your customers. We ask only that you follow the guidelines listed below:

- Please include a statement on your distribution diskette or with printed distribution materials which describes the nature of Shareware; that it is not free software, and requires separate payment to the author if the program is found useful. Most of you already do this, but believe it or not there are some who don't.
- You must distribute all files included in the original archive. You may not modify the files included in the original archive. Do not change the time and date of any included files. We discourage the inclusion of additional files unless they contribute to the ease of installation of the program. If you preinstall the game on a computer or system or hard disk you must include all files and they must be readily accessible. We've had one hardware manufacturer "forget" the help file - this is a No-No.

Just for your convenience, all required files are listed below:

```
WALNUTS . EXE
WALOPEN . WRP
WALBACK . WRP
WALNUTS . MID
WARPED . DLL
HISCORE . DLL
WARPED . HLP
```

- Your distribution fee should not exceed a reasonable amount for this program. The cost of registration is 12 bucks. Please don't charge any more than half of this.
- CD-ROM manufacturers: we request that you send us a copy of any CD-ROM that you place the program on. We have had difficulty in the past trying to support users who had trouble with their CD-ROM distribution mechanism. The more familiar we are with your product, the better we can help our users.
- We suggest the following write-up/description for use in your catalog, although you are free to use your own:

**Walnuts** - A psychotic squirrel moves back and forth across the treetops and drops nuts from his place in the tree. You control a basket and move it underneath of the nuts in an effort to catch them. Watch out: the squirrel throws rocks every now and then which break your basket. Game play is fast and furious.

Features of this game are: Arcade type action, Two-Players, High resolution video adapter support, Sound card support (including Wave sound effects and MIDI music score), Joystick, Mouse, and Keyboard control, Scaleable / Sizable Windows, High Score and On Screen Score display, and customization of parameters such as difficulty, speed, frequency, etc.

- It is not necessary for you to contact us to obtain our permission to distribute. If you follow the above guidelines you already have it. You may, if you like, send us a letter notifying us that you are distributing the game. We will put you on our list of vendors for updates and other products.

## Other programs by the Authors

### Warheads for Windows

Eric Lee Steadle and Brian C. Lowe are the authors of Warheads for Windows - an arcade style game simulating a nuclear attack by a foreign country. Warheads, which was also distributed as shareware, came out in 1991 and has been well received by the shareware community. Later it became part of a game package known as The Wayforward Game Pack 1 distributed by WayForward Technologies. Warheads can be obtained from the authors for \$17.00 (registered version) or from America On Line, Compuserve, Public Brand Software as well as many other shareware distributors.

[Order Forms](#)

### Warped for Windows

Eric and Brian have recently worked their magic again on six arcade games collectively known as Warped for Windows. These six games - SpaceRocks, Venusian Onslaught, RIPCord, Johnny Fingers, Walnuts, and The Execution - have some pretty impressive features, including:

- Two Player play (4 games simultaneous)
- Sound Card Support
- Adjustable Keyboard, Mouse, and Joystick Control
- High Resolution Video Card Support
- Scaleable / Sizable Windows
- High Score and On Screen Score display
- Options Galore
- Full Frontal Nudity - sorry, this one didn't make it.

**Walnuts** - Try to catch nuts dropped by a psychotic squirrel high in the treetops. Watch out - he's got a supply of rocks which break your basket.

**RIPCord** - Dangerous Dan and Fearless Fred decide that a skydiving competition is the only way to prove who is more of a man. To make it interesting they decide to dive over sparse islands in the South Pacific. Who will win this battle of testosterone?

**Venusian Onslaught** - The Earth has recently been devastated by a nuclear holocaust. Dissidents on Venus convince the Venusian government that now would be the ideal time to invade and conquer "that pitiful excuse for a planet - Earth". Earth's only hope is a brave soul named Voyde Farstar. Can Farstar and his faithful canine companion, Toby, turn back the entire Venusian military armed only with an aging and decrepit missile launcher?

**SpaceRocks** - After the attempted invasion of Earth, Voyde Farstar tries to make his way to the outer planets and rescue the hostages kidnapped by the Council of the Other Planets. The remains of a destroyed planet, now a dense, impenetrable asteroid belt, stand in his way. Be careful - the council of the outer planets knows you're coming; you can count on them being prepared.

**The Execution** - You are one of the world's best lawyers and you've decided to take on your toughest case since the Bar exam. Your client is an alleged murderer and is facing certain death unless you can defend him against these heinous charges. Your success will depend upon your mastery of the English Language.

**Johnny Fingers** - Career criminal Johnny Fingers is about to retire, however, before he decides to forgo his chosen profession in favor of a Caribbean resort he decides to take on an apprentice. You'll learn how to crack safes from the master, but watch out, the police know Johnny's going away. It makes them that much more determined to catch him - and you too!

The game you're playing is one of the six games included in Warped for Windows. The entire package can be obtained for \$35 from the authors. Obtained separately the games would cost you a lot more, but purchase the package and you'll get not only the six games mentioned above but something we call Grimmy's Playroom (a shell for launching Warped Games) as well as a bonus

game, "Toby vs the Anonymous Large Amphibious Lizard". What a great deal! More fun that 500 channels at about the same price as a month of cable! Hurry before the government deregulates us and we're forced to raise our rates like the cable companies!

[Order Forms](#)



## Registration

### Enabling Features of this Shareware Version

This game is shareware. It requires registration if use extends beyond a trial period. The trial period is 4 weeks (or 28 days, whichever comes first). This gives ample time to try out this program and see if it is for you.

### **What does registration get me?**

Registration gets you access to all of the features of the game you now have on hand, as well as access to future enhancements in the same game. If you order the full Warped for Windows package you'll get a set of diskettes with all six games in the Warped package, Setup and Uninstall programs, printable user's manual, Grimmy's Playroom, and bonus game "Toby vs the Anonymous Large Amphibious Lizard".

You'll also get the warm fuzzy feeling of having encouraged a shareware author not to go out and get a real job, but to sit at home and stare at a computer screen for hours on end while the spouse complains about the despicable state of repair the house has fallen into. New software doesn't grow on trees you know. It's nurtured by weird people who stay up late at night and type real fast and eat cold pizza and drink warm beer. They need money for programming books and magazines and compilers and electricity...

Finally, you get a chance to be heard. We'll be creating new games according to the requests of registered users. So if there's something you'd like to see or some game you'd like programmed let us know.

### **What if I don't want to register?**

If you decide not to register this game then please, by all means, give it to a friend, upload it to your favorite BBS, send it to your aunt Edna in Albuquerque. Even if you do register, we encourage the copying of this game for evaluation purposes. Remember though, at the end of 28 days your evaluation period is over. You must either register or discard the game. You are on your honor (and remember that Santa Claus is always watching).

### **What's it cost?**

If you decide that you would like to register this program, the fee is \$12.00.

You can also obtain the entire Warped Package (of which this game is a part) for \$35.00.

### **Didn't I already pay some money for this thing?**

If you obtained this program through a shareware distribution service, the fee you paid was not for registration. It was for the media and handling charges associated with distribution. The distributor got that money, not the authors. You do not have a registered copy.

### **OK, OK! How do I register?**

To register, print out a copy of the registration form(click the words to jump to it). Send it with a check, money order, or cash equivalent to the author:

*Eric Lee Steadle  
750 Harrison City Road  
Trafford, PA 15085-1634*

### **A note to residents of Pennsylvania:**

Pennsylvania requires us to collect 6% state sales tax. Please include State sales tax with your order.

**A note to those of you in Canada:**

If you are sending a check drawn on a Canadian bank then please add \$5.00 to the amount for processing fees (the banks, not ours).

If your bank also does business in the United States and you have an account which allows you to specify the type of currency (which must be US) then you do not need to include the extra processing fees.

If you send a Canadian Postal Money Order in United States currency, then you do not need to add processing fees.

**A note to those of you outside the United States and Canada:**

We cannot accept checks drawn on a bank outside of the United States. We suggest an International Money Order and recommend American Express. Other payment arrangements can be made by contacting the Author.

# Registration Form

To register, please print this form (Use File | Print Topic... ). It should print on any Windows compatible printer. The information requested is used only for internal processing, to inform you of updates, and of other products by the authors. It will not be given away or sold to anyone. (You may make comments on the back of the form).

Name \_\_\_\_\_  
Address \_\_\_\_\_  
City \_\_\_\_\_ State \_\_\_\_\_ Zip \_\_\_\_\_  
Phone \_\_\_\_\_ Fax \_\_\_\_\_  
Email ID \_\_\_\_\_

- Walnuts \$ 12.00\*
  - SpaceRocks \$ 12.00\*
  - Warheads for Windows \$ 17.00\*
  - Warped for Windows \$ 35.00\*
- Total: \_\_\_\_\_

### ***How did you obtain this software?***

- Online service (AOL, CIS, Genie, etc.) \_\_\_\_\_
- Shareware Service (name) \_\_\_\_\_
- Bulletin Board (name or number) \_\_\_\_\_
- Friend (height, eye color) \_\_\_\_\_
- Other (retail, show, aliens in raingear) \_\_\_\_\_

### ***Tell us about your computer system:***

Manufacturer	_____	BIOS manufacturer	_____
Processor type	_____	Processor Speed	_____
Hard Disk Size	_____	Memory Size	_____
Video Board	_____	Sound Board	_____
Your order will be sent on high density 3.5 inch diskettes unless you indicate otherwise		Disk Size	_____

**Please return this form and a check or money order to:**

Eric Lee Steadle

750 Harrison City Road  
Trafford, PA 15085

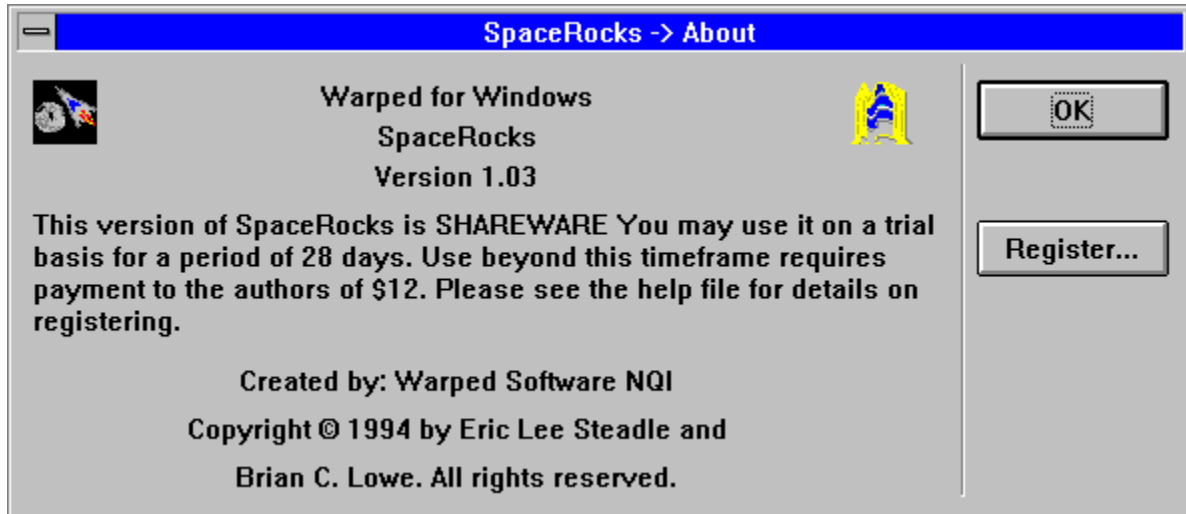
\* Those outside the US please see the topic [Registration](#) for comments about currency conversion and additional fees; PA residents please add 6% state income tax.

*Revision 1.02 4/15/94*

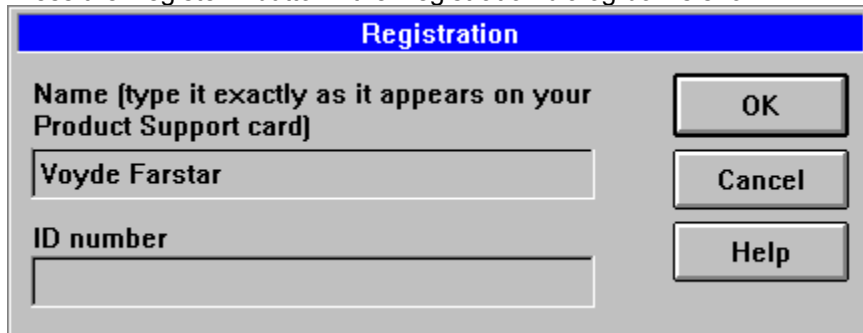
## Enabling Features of this Version

If you register the program you'll receive a postcard with a set of Identification codes on them. You can use these codes to enable all of the features of the shareware version you presently have. To enable the features, have your product support card handy and follow these instructions:

Start the appropriate program - an About box similar to the one below is shown (this is an example for SpaceRocks, but all Warped for Windows games are similar):



Press the Register... button - the Registration dialog box is shown:



Type the name on the Product support card exactly as it appears on the card. Include spacing, capitalization, and punctuation.

Type the ID code as it appears on the product support card. Include spacing and punctuation here as well.

Press OK.

If you typed the name and the ID code properly, the shareware notice and Register Button disappear. Also, all game features are enabled, and the Shareware notices at the beginning and the end of the game go away. If you did not type the name or ID correctly, try again. Remember punctuation and spelling are significant.

[Information for those who already have Warped for Windows](#)

## Information for those who already have Warped for Windows

Those of you who purchased the Special Offer Warped Package already have codes which you received with your distribution diskettes. Those codes can be used with this shareware version to fully enable its features. If the version included in this archive is dated later than the version you presently have installed on your system, then you may want to consider enabling the features with your codes. If this version is the same, then you shouldn't bother.

The version of the game contained in this archive does not contain an automatic setup program as you may be familiar with from your Warped for Windows package. This was done to minimize the size of the archive since it is most often transmitted electronically. We have some instructions below on how to update an existing installation of Warped for Windows.

1. First unzip the archive into a temporary directory. Note the names of the files in this directory.
2. Switch to your WARPED directory (who's name may be different depending upon your preferences at installation) and compare the date on the files in this directory to those in the temporary directory.
3. If the files in the temporary directory are dated later than those in the WARPED directory, delete those in the WARPED directory and replace them with those in the temp directory. You should be keeping the most recent version of any file.

**Note:** Don't copy over the WARPED.HLP file under any circumstances. Keep the one from the original installation diskettes. The one that comes with the original installation disks has information about all games in it. The one you're reading now only has information about the game that it came with.

---

[Revision History](#)

## Revision History

### SpaceRocks Version information

- 1.00 Initial Release
- 1.01 Internal debugging build not released to public (see below).
- 1.02 Fixed a bug: General protection faults with Trident video drivers. The fault occurs at 0008:057A in MT640.DRV and is due to a small driver glitch. This driver cannot handle the LoadBitmap function if the bitmap is in DIB format.
- 1.03 Shareware Version release.

### Walnuts Version information

- 1.00 Initial Release
- 1.01 Shareware Version release.

# **Warped™ for Windows - Walnuts**

[Copyright Information](#)

[Registration](#)

[Registration Form](#)

[Other Programs by the Authors](#)

[Enabling Features of this Shareware Version](#)

[Information for those who already have Warped for Windows](#)

[Redistribution](#)

[Object](#)

[Game Play](#)

[Strategy](#)

[Scoring](#)

[Main Options](#)

[Game Options](#)

[Control Options](#)

[High Scores](#)

[Accelerator Keys](#)

[Joysticks](#)

[If you have problems...](#)

[Memory Issues](#)

[3 Dimensional Dialog Boxes](#)

[Other Information](#)

[About the Authors](#)

[Special Thanks](#)



## Walnuts: Object

Catch all of the nuts that the squirrel throws at you. If you miss a nut then you lose a basket. The squirrel can throw rocks, depending upon the options you've selected on the control panel, do not catch the rocks - they break your basket.

Walnuts was a product of Brian's imagination. The original concept came to him after Eric described a battle he was having at his house with the subject rodents. Eric has Shagbark Hickory trees which produce a lot of nuts that are pretty tasty. The problem was that the squirrels around Eric's house thought they were awfully tasty too. Eric was willing to share the nuts with the squirrels, but the squirrels weren't willing to share with Eric. Since the squirrels are much better climbers than Eric, they got the upper hand. They'd sit up in the tree, pick the nuts, open them up and eat them. Then they'd drop the bark part on the ground, then when Eric cut the grass, his lawnmower turned into a missile launcher. The result of all this is the game you see here. And Eric still doesn't know how to get those stinking rodents to stop eating his nuts.

And yes, the name of the game is Walnuts for Windows; so what? Somehow, Shagbark Hickory Nuts for Windows doesn't seem like it would sell very well. And Eric does have Walnut trees too. The squirrels don't like them that much since they're really hard to get into, which is the same reason Eric doesn't like them that much either.

## **Walnuts: Game Play**

The squirrel moves back and forth and drops nuts from his place in the tree. You control the basket and move it underneath of the nuts in an effort to catch them. If you miss a nut, you'll see it crack open and you won't be able to catch any more. The remaining nuts on the screen also fall to the ground, then you lose a basket. When you do lose a basket, you drop back one level and the squirrel throws only half as many objects.

As you progress to higher levels, the Squirrel will throw more nuts and will throw them faster. It becomes increasingly difficult to catch them all.

The squirrel also gets crafty in later rounds and will begin to throw rocks (which will break your basket).

If you progress through all ten levels of play, you'll begin again at level 5 with a smaller basket.

Be on the lookout for other items, too. Sometimes the squirrel throws a cherry, or even an extra basket. You don't have to catch them, but you probably want to.

## Walnuts: Strategy

The squirrel moves back and forth across the screen in a seemingly random pattern. Watch his movement and from it you'll be able to anticipate where the nuts will fall and move your basket to the proper position in response.

Give yourself a break between rounds. Turn on the Status Dialog on the Main Options dialog box.

Use the mouse (preferably) or a trackball as your control device. The smooth movement of these two devices makes it easier to control the basket.

Turn on Sound Effects from the Main Settings dialog box. This allow you to hear when you've caught the nut so that you don't have to focus on the one you're catching. We do not recommend this if you don't have a sound card, however.

There's a small amount of grace at the edges of your basket. Nuts which don't look like they would really fall into the basket will. Again sound helps you tell when. Be careful because rocks are subject to the same principal.

If you need to, use the Game Options dialog box to turn off rocks or decrease their frequency.

## **Walnuts: Scoring**

<b><u>Nuts</u></b>	1 point x current round number
<b><u>Rocks</u></b>	lose 1 basket
<b><u>Cherry</u></b>	5 points x current round number
<b><u>Basket</u></b>	Extra bonus basket







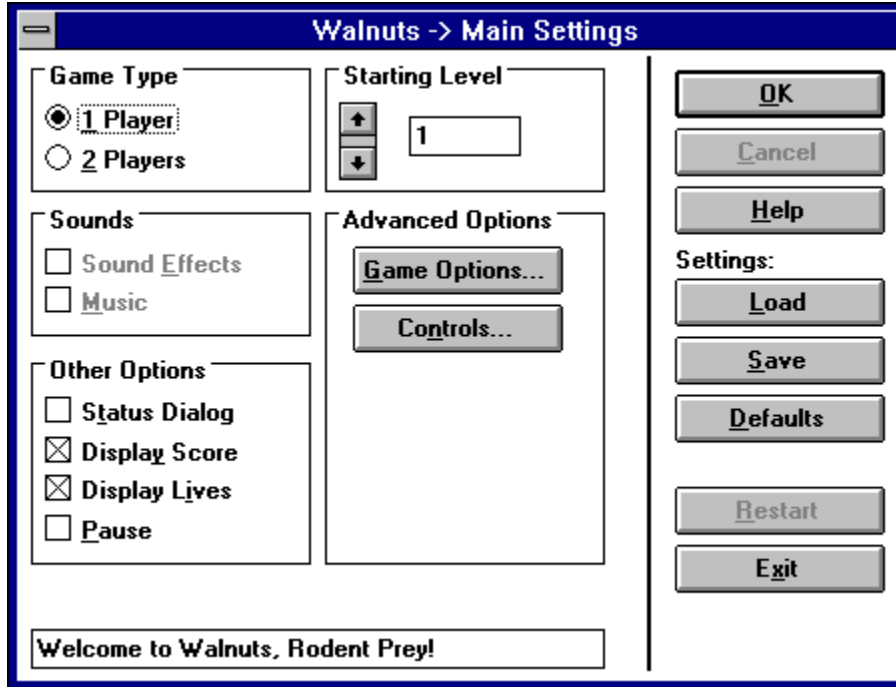




## Walnuts: Main Options

The Main Options dialog box for Walnuts is shown below. You can click on it's various controls to get a description of the control's purpose and actions.

**Note:** To show the Main Options dialog box, use Ctrl+Left Mouse Button, press Ctrl+C, or press F9.

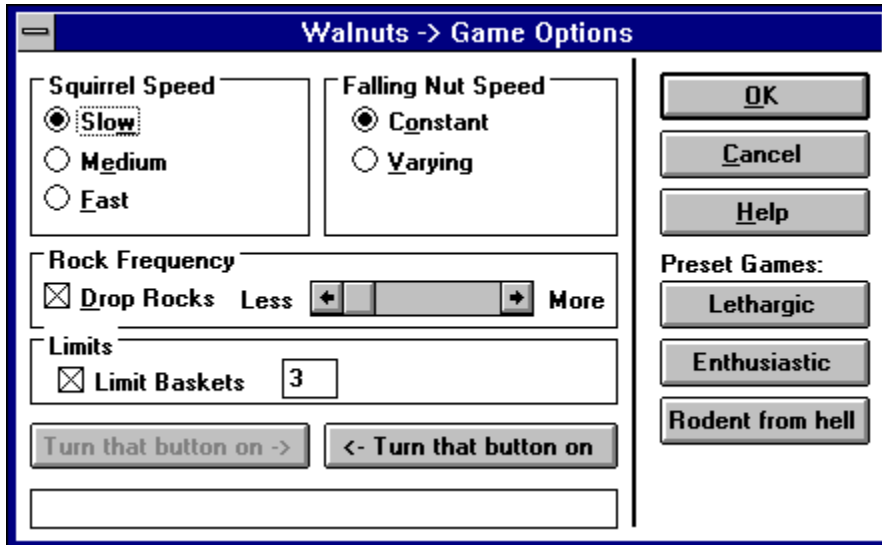


## Walnuts: Game Options

The Game Options dialog box for Walnuts is shown below. You can click on its various controls to get a description of the control's purpose and actions.

**Note:** to show the Game Options dialog box, use the Game Options... button on the Main Options dialog box.

---

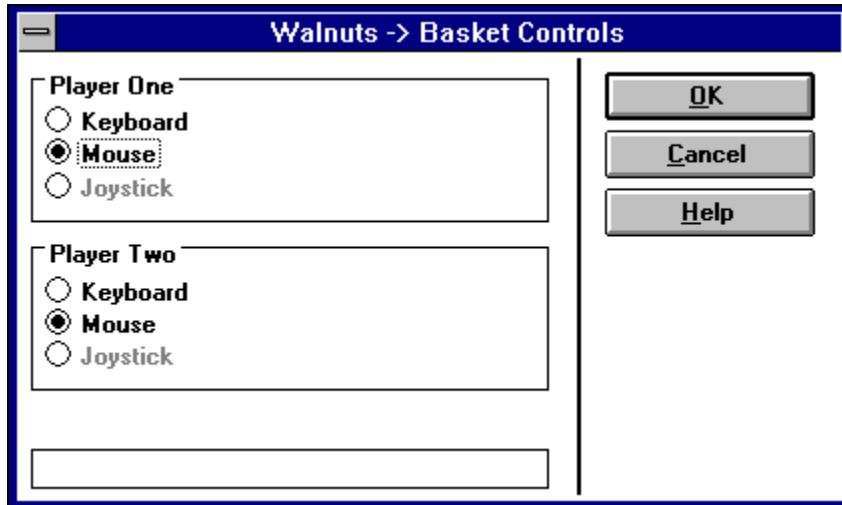


## Walnuts: Control Options

The Control Options dialog box for Walnuts is shown below. You can click on its various controls to get a description of that control's purpose and actions.

**Note:** to show the Control Options dialog box, use the Control Options... button on the Main Options dialog box.

---



### Walnuts: Status Dialog

Walnuts -> Status	
<b>Player 1</b>	
Score:	<input type="text" value="0"/>
Level:	<input type="text" value="1"/>
Objects Thrown:	<input type="text" value="0"/>
Remaining Baskets:	<input type="text" value="3"/>
Rock Ratio:	<input type="text" value="0%"/>
Avg. Squirrel Velocity:	<input type="text" value="6"/>
<b>Player 2</b>	
Score:	<input type="text"/>
Level:	<input type="text"/>
Objects Thrown:	<input type="text"/>
Remaining Baskets:	<input type="text"/>
Rock Ratio:	<input type="text"/>
Avg. Squirrel Velocity:	<input type="text"/>

***Walnuts: Game Type***

Allows you to select whether one or two players participate. In Walnuts, players must take turns. So if you're all alone select one player. If there's someone next to you then select two players. And if you also happen to be in bed playing this on a laptop, quit now and turn off your computer. What are you doing playing a game ?

***Walnuts: Game Options... Button***

Use this button to show the Game Options dialog box.

***Walnuts: Controls... Button***

Use this button to show the Control Options dialog box. Controls include Keyboard controls, Mouse controls, and Joystick controls.

### ***Walnuts: Squirrel Speed***

Use these buttons to control the speed of the squirrel as he traverses the tree tops.



### ***Walnuts: Falling Nut Speed***

Use these buttons to control whether the speed of the Walnuts dropped by the squirrel remains constant (easier) or varies (harder). If you select varying, the squirrel throws each nut with a random amount of force. Select constant and he simply drops them all.

***Walnuts: Drop Rocks***

Check this box if you wish to have the squirrel drop rocks in addition to walnuts. Rocks break your basket if you accidentally catch them.

Of course rocks don't really grow on trees. We realize that this is a common misconception and we don't wish to further promote this concept. Suffice it to say that this is a precocious squirrel who prepared adequately for his role by stocking up on rocks the night before.

### ***Walnuts: Rock Frequency Scroll Bar***

You can adjust the frequency of rocks that the squirrel throws. Move the slider towards More and the squirrel throws many rocks (more difficult). Move it towards Less and the squirrel will take it easy on you.

### ***Walnuts: Basket Limits***

Check this to limit the number of baskets you get per game. Uncheck this and you'll have an unlimited number of baskets and your game will not end until you exit the program. If you are limiting your number of baskets, you can change how many you lose before the game starts over (up to a maximum of 99).

Now in real life, the local supply store doesn't stock an unlimited number of baskets. They know about inventory management and probabilities and trending. So you may not want to mess up their system, otherwise they'll be stuck next month with a LOT of extra baskets and no one to sell them to.

## ***Turn That Button On***

Turns that button on. (If only it was that easy in real life).

## ***Turn That Button On***

Turns that button on. (We know people who will pay money for that kind of control!)

### ***Walnuts: Preset Games***

We have provided the ability to quickly set up a game by pressing one of the buttons below. See the description of each of the buttons.

***Walnuts: Lethargic***

Sets up the game options for a nice leisurely game of Walnuts.



***Walnuts: Enthusiastic***

Sets up the game options for a relatively challenging game of Walnuts.

***Walnuts: Rodent From Hell***

Sets up the game options so that you will lose and lose big.

### ***Walnuts: Keyboard***

Sets the control device to the keyboard. Note that if two players are playing, both can be set to the keyboard. It just means that you'll need to take turns.

Cursor Left moves the basket left, and Cursor Right moves the basket right.

**Hint:** If two players are using the keyboard, turn on the Status Dialog option on the Main Options dialog box. This will allow you time to switch players after someone loses a basket.

---

## ***Walnuts: Mouse***

Sets the control device to the mouse. Note that if two players are playing, both can be set to the mouse. It just means that you'll need to take turns, and exchange the mouse.

**Hint:** If two players are using the same input device, turn on the Status Dialog option on the Main Options dialog box. This will allow you time to switch players after someone loses a basket.

---

**Hint:** If you don't want to see the mouse cursor (arrow pointer) press the Right Mouse Button. Sometimes the cursor becomes distracting so we have provided you the ability to hide it. To get it back, press the Right Mouse Button again.

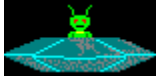
---

### ***Walnuts: Joystick***

Sets the control device to a Joystick. Note that if two players are playing, both can be set to the same Joystick. It just means that you'll need to take turns. Joysticks are special, there can actually be two of them on your system (using the included Joystick driver). Player 1 always uses Joystick 1 and Player 2 always uses Joystick 2.

**Note:** If you have two joysticks and one doesn't seem to be working you may have to set up the Joystick driver using the Drivers Applet on the Control Panel for **two** 2-D joystick (not one 3-D joystick). See the topic on [Joysticks](#) for more information.

---













Behind every great hero is a sidekick, and Voyde Farstar is no different. His sidekick is a faithful German Shepherd named Toby. Toby has fought an Anonymous Large Amphibious Lizard (repeatedly) and lost, as well as survived the final world war (despite the fact he's a dog, not a cockroach). He has remained faithful to Farstar throughout the entire ordeal.

That's you

no kidding, look it up!

